

INSTRUCTIONS FOR PRODUCING MANUSCRIPT USING MS-WORD FOR PUBLICATION IN CONFERENCE PROCEEDINGS*

FIRST AUTHOR[†]

*University Department, University Name, Address
City, State ZIP/Zone, Country*

SECOND AUTHOR

*Group, Laboratory, Address
City, State ZIP/Zone, Country*

This is where the abstract should be placed. It should consist of one paragraph giving a concise summary of the material in the article below. Replace the title, authors, and addresses with your own title, authors, and addresses. You may have as many authors and addresses as you like. It is preferable not to use footnotes in the abstract or the title; the acknowledgments of funding bodies etc. are to be placed in a separate section at the end of the text.

1. Guidelines

1.1. Producing Hard Copy Using MS-Word

You can delete our sample text and replace it with the text of your own contribution to the proceedings. However we recommend that you keep an initial version of this file for reference.

Page numbers are included at the top of the page for your guidance. The final pagination of the volume will be done by the Publisher.^a

If you want to use some other form of word-processor to construct your output, and you are using the final hard copy version of these files as guidelines; then please follow the style given here for headings, table and figure captions, and the footnote and citation marks. The book trim size will be 9 by 6 inches; however you should submit your ms copy on standard A4 paper. The text area

^a This work is supported by etc, etc.

[†] Work partially supported by grant 2-4570.5 of the Swiss National Science Foundation.

^a You can obtain these files from our WWW pages at:
http://www.wspc.com.sg/style/proceedings_style.shtml

including page numbers should be 7.35 by 4.5 inches, except for opening page. The text should be set in 10 pt roman with a leading (interline spacing) of 13 pt. Type the title of the paper in 11 pt boldface and in upper case. The 1st section heading is in 10 pt boldface, upper and lower case. The 2nd section heading is in 10 pt bold italic, upper and lower case. If there is a 3rd section heading then it should be 10 pt italic.

Authors' names are set in 9 pt and in upper case. Addresses are in 9 pt italics. The abstract, figure and table captions should be in 8 pt.

It is also important to reproduce the spacing of the text and headings as shown here. Text should be slightly more than single-spaced; use a leading (which is the average distance from the base of one line of text to the base of an adjacent line) of 13 pt and 10 pt for footnotes. All headings should be separated from the text preceding it by a vertical space of about 12 pt and by 6 pt from the subsequent text.

Paragraphs should have its first line indented by about 0.25 inch except where the paragraph is preceded by a heading and the abstract should be indented on both sides by 0.25 inch from the main body of the text.

1.2. *Headings, Text and Equations*

Please preserve the style of the headings, text font and line spacing in order to provide a uniform style for the proceedings volume.

Equations should be centered and numbered consecutively, as in Eq. (1). An alternative method is given in Eq. (2) for long sets of equations where only one referencing equation number is wanted.

1.3. *List*

The basic model makes the following assumptions:

1. Environmental fluctuations may have a negative effect on the number of species. This effect is due to physiological stress, which may even cause the extinction of some species.
2. Environmental variability may have a positive effect on richness because it relaxes interspecific competition.
3. Both effects are independent and additive.
4. Both effects, stress and competence, can be represented by average values in two different parameters, which may be considered as constants.

To analyze the model behavior under different scenarios we consider three cases. First, the competitive effect is bigger than the stress one; second, both effects have a similar magnitude; third, the effect of stress is the biggest:

- Environmental fluctuations may have a negative effect on the number of species. This effect is due to physiological stress, which may even cause the extinction of some species.
- Both effects are independent and additive.
- Both effects, stress and competence, can be represented by average values in two different parameters, which may be considered as constants.

To contrast the model predictions against several sets of field data, we use richness values of benthic communities from Sousa Reis *et al.* [19], and earthworm richness data of forested soils [9]. We fit the model with each data set assuming a normal distribution of errors and minimizing the sum of square deviations [20].

1.4. Tables

The tables are designed to have a uniform style throughout the paper? It does not matter how you choose to place the inner lines of the table, but we would prefer the border lines to be of the style shown in Table 1. For the inner lines of the table, it looks better if they are kept to a minimum.

The caption heading for a table should be placed at the top of the table.

Table 1. First five normalized natural frequencies of a clamped beam with internal hinge at 4 different locations.

	A = 0.56	B = 0.69	C = 0.75	D = 0.100
AB ₁	14.0640	18.5620	22.0817	18.90732
AC ₂	61.6728	44.7844	44.5884	60.17496
AD ₃	88.1380	118.1564	101.2240	120.72693
DB ₄	199.8594	173.1269	194.4907	188.75258
DA ₅	246.7889	255.9483	284.6633	262.24264

1.5. Figures/Illustrations

Authors are advised to prepare their figures in black and white. Please prepare the figures in high resolution (300 dpi) for half-tone illustrations or images. Half-tone pictures must be sharp enough for reproduction, otherwise they will be rejected.

Colour images are allowed only when they are stated in the publishing agreement. The colour images must be prepared in CMYK (Cyan, Magenta, Yellow and Black). RGB colour images are not acceptable for colour separation.

It is best to embed the figures in the text where they are first cited, e.g. see Figure 1. Please ensure that all labels in the figures are legible irregardless of whether they are drawn electronically or manually.

If you prefer to submit glossy prints of figures, then it is very important to leave sufficient blank spaces in your manuscript to accommodate your figures. Send the hard copy of the figures on separate pages with clear instructions on where to match them to the respective blank spaces in the final hard copy text. Please ensure that each figure is correctly scaled (ensure legibility) to fit the space available. The caption heading for a figure should be placed below the figure.

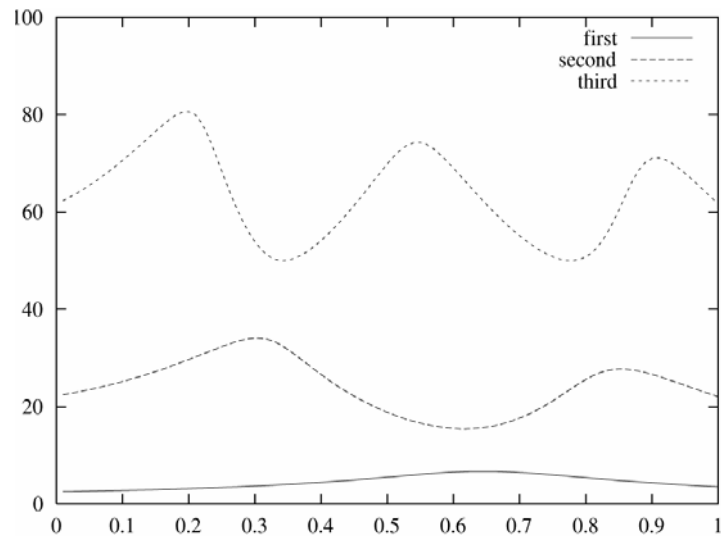


Figure 1. First 3 normalized frequencies versus release location for clamped simply supported beam with internal slide release.

1.6. Limitations on the Placement of Tables, Equations and Figures

Very large figures and tables should be placed on a page by themselves.

1.7. Acknowledgments, Appendices, Footnotes and the Bibliography

If you wish to acknowledge funding bodies etc., the acknowledgments may be placed in a separate section at the end of the text, before the Appendices.

It is preferable not to have Appendices in a brief article, but if more than one Appendix is necessary then set headings as Appendix A, Appendix B etc.

1.7.1. Footnotes and the citation

Footnotes are denoted by a character superscript in the text,^b and references are denoted by a number superscript. If you use square brackets for citation e.g. [2] please note that the citation should appear before the punctuation mark, e.g. [2], in the body text.

1.8. Final Manuscript

The final hard copy that you submit must be absolutely clean and unfolded. It will be printed directly without any further editing. Use a printer that has a good resolution printout (600 dpi or higher). There should not be any corrections on the printed pages, nor should adhesive tape cover any lettering. Photocopies are not acceptable.

Your manuscript will not be reduced or enlarged when filmed so please ensure that indices and other small pieces of text are legible.

2. Sample Mathematical Text

The following may be (and has been) described as ‘dangerously irrelevant’ physics. The Lorentz-invariant phase space integral for a general n -body decay from a particle with momentum P and mass M is given by:

$$I\left((P - k_i)^2, m_i^2, M\right) = \frac{1}{(2\pi)^5} \int \frac{d^3 k_i}{2\omega_i} \delta^4(P - k_i). \quad (1)$$

The only experiment on $K^\pm \rightarrow \pi^\pm \pi^0 \gamma$ since 1976 is that of Bolotov *et al.*³ There are two necessary conditions required for any acceptable parametrization of the quark mixing matrix. The first is that the matrix must be unitary, and the second is that it should contain a CP violating phase δ . In Sec. 1.2 the connection between invariants (of form similar to J) and unitarity relations will be examined further for the more general $n \times n$ case. The reason is that such a matrix is not a faithful representation of the group, i.e. it does not cover all of the parameter space available

$$\begin{aligned} T = & \text{Im} \left[V_{11} V_{12}^* V_{21}^* V_{22} \right] \\ & + \text{Im} \left[V_{12} V_{13}^* V_{22}^* V_{23} \right] \\ & - \text{Im} \left[V_{33} V_{31}^* V_{13}^* V_{11} \right]. \end{aligned} \quad (2)$$

^b Just like this one.

where $k = j$ or $j + 1$ and $\beta = \alpha$ or $\alpha + 1$, but if $k = j + 1$, then $\beta \neq \alpha + 1$ and similarly, if $\beta = \alpha + 1$ then $k \neq j + 1$.^c There are only 162 quark mixing matrices using these parameters which are to first order in the phase variable $e^{i\delta}$ as is the case for the Jarlskog parametrizations, and for which J is not identically zero. It should be noted that these are physically identical and form just one true parametrization

$$\begin{aligned} K = & \text{Im} \left[V_{j,\alpha} V_{j,\alpha+1} {}^*V_{j+1,\alpha} {}^*V_{j+1,\alpha+1} \right] \\ & + \text{Im} \left[V_{k,\alpha+2} V_{k,\alpha+3} {}^*V_{k+1,\alpha+2} {}^*V_{k+1,\alpha+3} \right] \\ & + \text{Im} \left[V_{j+2,\beta} V_{j+2,\beta+1} {}^*V_{j+3,\beta} {}^*V_{j+3,\beta+1} \right] \\ & + \text{Im} \left[V_{k+2,\beta+2} V_{k+2,\beta+2} {}^*V_{k+3,\beta+2} {}^*V_{k+3,\beta+3} \right] \end{aligned} \quad (3)$$

$$\begin{aligned} M = & \text{Im} \left[V_{j,\alpha} {}^*V_{j,\alpha+1} V_{j+1,\alpha} V_{j+1,\alpha+1} {}^* \right] \\ & + \text{Im} \left[V_{k,\alpha+2} V_{k,\alpha+3} {}^*V_{k+1,\alpha+2} {}^*V_{k+1,\alpha+3} \right] \\ & + \text{Im} \left[V_{j+2,\beta} {}^*V_{j+2,\beta+1} V_{j+3,\beta} V_{j+3,\beta+1} {}^* \right] \\ & + \text{Im} \left[V_{k+2,\beta+2} V_{k+2,\beta+2} {}^*V_{k+3,\beta+2} {}^*V_{k+3,\beta+3} \right]. \end{aligned}$$

Acknowledgments

This is where one acknowledge funding bodies etc. Note that section numbers are not required for Acknowledgments, Appendix and References.

Appendix

Appendices should be used only when sophisticated technical details are crucial to be included in the paper. If there is more than one appendix, number them alphabetically.

$$\mu(n,t) = \frac{\sum_{i=1}^{\infty} 1(d_i < t, N(d_i) = n)}{\int_{\sigma=0}^t 1(N(\sigma) = n) d\sigma}. \quad (\text{A.1})$$

References

1. M. Barranco and J. R. Buchler, *Phys. Rev.* **Cf22**, 1729 (1980).
2. H. Müller and B. D. Serot, *Phys. Rev.* **C52**, 2072 (1995).

^c An example of a matrix which has elements containing the phase variable $e^{i\delta}$ to second order.

3. V. Baran, M. Colonna, M. Di Toro and A. B. Larionov, *Nucl. Phys.* **A632**, 287 (1998).
4. V. Baran, M. Colonna, M. Di Toro and V. Greco, *Phys. Rev. Lett.* **86**, 4492 (2001).